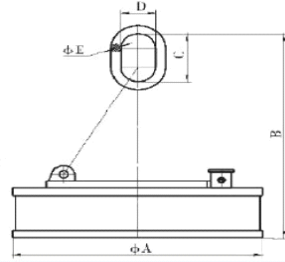


M5系列吊運廢鋼用起重電磁鐵：適用於搬運鑄鐵錠、鋼球及各種廢鋼。

Lifting Electromagnet Series M5 for Lifting and Transporting Steel Scraps.



常溫型技術參數 Technical data for normal temperature type

DC-220V, TD-50%

型號Model	電流 (A) Current	功率 (kw) Power	起重能力 (kg) (冷態/熱態) lifting capacity (cold/hot state)			品質 (kg) Mass	外形尺寸 (mm) Overall dimension					整流控制設備 Commutation Controlling	電纜捲筒 電纜連接器 Cable reel
			鋼球steel ball	鋼錠steel ingot	切屑steel scrap		A	B	C	D	E		
M5-70L/1	15	3.3	2500	380/200	120/100	490	700	800	160	90	30	STML-4E-C	JTA75-15-2 DL-102
M5-80L/1	18	3.96	3000	480/250	150/130	620	800	800	160	90	30		
M5-90L/1	26.6	5.85	4500	600/400	250/200	800	900	1090	200	125	40	STQL-7E-C	JTA100-15-2 DL-102
M5-110L/1	35	7.7	6500	1000/800	450/400	1350	1100	1140	220	150	45	STQL-9E-C	
M5-120L/1	45.5	10	7500	1300/1000	600/500	1700	1200	1180	220	150	45	STQL-14E-C	
M5-130L/1	54	11.9	8500	1400/1100	700/600	2060	1300	1240	250	175	50	STQL-19E-C	
M5-150L/1	71.2	15.6	11000	1900/1500	1100/900	2830	1500	1250	350	210	60	STQL-19E-C	
M5-165L/1	75	16.5	12500	2300/1800	1300/1100	3200	1650	1590	370	230	75	STQL-25E-C	
M5-180L/1	102.4	22.5	14500	2750/2100	1600/1350	4230	1800	1490	370	230	75	STQL-32E-C	JTA200-15-2 DL-202
M5-210L/1	129	28.4	21000	3500/2800	2200/1850	7000	2100	1860	400	250	80	STQL-38E-C	
M5-240L/1	154	33.9	26000	4800/3800	2850/2250	9000	2400	2020	450	280	90	STQL-38E-C	

高頻型技術參數 Technical data for high frequency type

DC-220V, TD-75%

型號Model	電流 (A) Current	功率 (kw) Power	起重能力 (kg) (冷態/熱態) lifting capacity (cold/hot state)			品質 (kg) Mass	外形尺寸 (mm) Overall dimension					整流控制設備 Commutation Controlling	電纜捲筒 電纜連接器 Cable reel
			鋼球steel ball	鋼錠steel ingot	切屑steel scrap		A	B	C	D	E		
M5-110L/1-75	27.6	6.07	6500	1000/800	450/400	1500	1100	1270	220	150	45	STQL-9E-C	JTA100-15-2 DL-102
M5-120L/1-75	33.6	7.4	7500	1300/1000	600/500	1850	1200	1220	220	150	45		
M5-130L/1-75	40.7	8.95	8500	1400/1100	700/600	2280	1300	1290	250	175	50	STQL-14E-C	
M5-150L/1-75	51.4	11.3	11000	1900/1500	1100/900	3180	1500	1360	350	210	60	STQL-19E-C	
M5-165L/1-75	55.6	12.2	12500	2300/1800	1300/1100	3840	1650	1670	370	230	75	STQL-25E-C	
M5-180L/1-75	73.9	16.3	14500	2750/2100	1600/1350	4690	1800	1600	370	230	75	STQL-32E-C	
M5-210L/1-75	98.5	21.7	21000	3500/2800	2200/1850	7500	2100	1900	400	250	80	STQL-38E-C	JTA200-15-2 DL-102
M5-240L/1-75	117.6	25.9	26000	4800/3800	2850/2250	9800	2400	2100	450	280	90	STQL-38E-C	

高溫型技術參數 Technical data for high temperature type

DC-220V, TD-50%

型號Model	電流 (A) Current	功率 (kw) Power	起重能力 (kg) (冷態/熱態) lifting capacity (cold/hot state)			品質 (kg) Mass	外形尺寸 (mm) Overall dimension					整流控制設備 Commutation Controlling	電纜捲筒 電纜連接器 Cable reel
			鋼球steel ball	鋼錠steel ingot	切屑steel scrap		A	B	C	D	E		
M5-70L/2	12.77	2.8	2500	380/200	120/100	520	700	820	160	90	30	STML-4E-C	JTA75-15-2 DL-102
M5-80L/2	16.1	3.54	3000	480/250	150/130	650	800	820	160	90	30		
M5-90L/2	20.5	4.51	4500	600/400	250/200	900	900	1110	200	125	40	STQL-7E-C	JTA100-15-2 DL-102
M5-110L/2	27.5	6.05	6500	1000/800	450/400	1500	1100	1350	220	150	45	STQL-14E-C	
M5-120L/2	33.6	7.4	7500	1300/1000	600/500	1800	1200	1280	220	150	45	STQL-19E-C	
M5-130L/2	40.6	8.93	8500	1400/1100	700/600	2300	1300	1280	250	175	50	STQL-19E-C	
M5-150L/2	51.4	11.3	11000	1900/1500	1100/900	3200	1500	1620	350	210	60	STQL-25E-C	
M5-165L/2	60.6	13.3	12500	2300/1800	1300/1100	3500	1650	1630	370	230	75	STQL-32E-C	
M5-180L/2	95	20.9	14500	2750/2100	1600/1350	4500	1800	1510	370	230	75	STQL-32E-C	
M5-210L/2	104	22.91	21000	3500/2800	2200/1850	7400	2100	1910	400	250	80	STQL-32E-C	
M5-240L/2	118.6	26	26000	4800/3800	2850/2250	9800	2400	2080	450	280	90	STQL-32E-C	