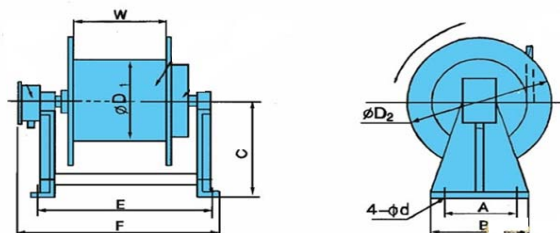


彈簧式電纜捲筒

1、彈簧內裝式電纜卷筒 Spring Built-in Type Cable Reel



JT 系列滑環內裝式電纜捲筒外形尺寸 Outline Dimensions of Series JT Slip Ring Built-in Type Cable Reel

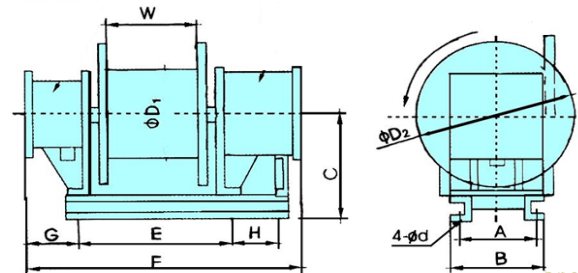
外形序號 Outline Item		A	B	C	D1	D2	d	E	F	W	品質 kg Weight
10m 系列 Series 10m	1	250	300	300	360	500	14	450	600	320	73
	2							485	650	350	78
15m、20m 系列 Series 15m, 20m	1	300	360	400	500	700	15	440	600	250	95
	2							490	650	300	100
	3							560	720	250	115
	4							610	770	300	120
	5							720	880	300	150
25m、30m 系列 Series 25m, 30m	1	400	460	450	600	800	18	525	675	300	120
	2							641	795		150
	3							751	905		180
	4							892	1045		212
	5	500	580	550	800	1000	18	641	795	300	185
	6							751	905		212
	7							892	1045		240

	8							1005	1160		268
--	---	--	--	--	--	--	--	------	------	--	-----

JT 系列滑環內裝式電纜捲筒主要技術參數 Main Technical Parameters of Series JT Slip Ring Built-in Type Cable Reel

型號 Model	允許電流 A Allowable Current A		10M 系列 Series 10M	外型 序號 Outline Item	15M 系列 Series 15M	外型 序號 Outline Item	20M 系列 Series 20M	外型 序號 Outline Item	25m 系列 Series 25M	外型 序號 Outline Item	30m 系列 Series 00M	外型 序號 Outline Item	
	連續 Continu ous	一分開 On 一分關 Off											
CRHF7×2.5	12	20	JTA20-10-6	2									
			JTB20-10-6										
			JTC20-10-6										
			JTD20-10-6										
			JTE20-10-6										
			JTF20-10-6										
YC2×6	40	50					JTB50-25-2		JTA50-25-2	1			
YC2×10	58	75	JTA75-10-2	1	JTA75-15-2	1	JTA75-20-2	1	JTA75-25-2	2	JTA75-30-2	6	
			JTB75-10-2		JTB75-15-2		JTB75-20-2		JTB75-25-2		JTB75-30-2		
YC2×16	77	100	JTA100-10-2	1	JTA100-15-2	1	JTA100-20-2	3	JTA100-25-2	2	JTA100-30-2	6	
			JTB100-10-2		JTB100-15-2		JTB100-20-2		JTB10025-2		JTB100-30-2		
YC2×25	106	135	JTA135-10-2	1	JTA135-15-2	4	JTA135-20-2	4	JTA135-25-2	3	JTA135-30-2	8	
YC2×35	132	170				JTA170-15-2	4	JTA75-20-2	5	JTA75-25-2	4		
						JTB170-15-2		JTA75-20-2		JTA75-25-2			
YC3×10+1×6	50	65				JTA65-15-4	2	JTA65-20-4	4	JTA65-25-4	2	JTA65-30-4	6
						JTB65-15-4		JTB65-20-4		JTB65-25-4		JTB65-30-4	

2、彈簧外裝式電纜捲筒 Spring Built-out Type Cable Reel



JT 系列彈簧外裝式電纜捲筒外形尺寸 Outline Dimensions of Series JT Spring Built-out Type Cable Reel

外型序號 Outline Item		A	B	C	D1	D2	d	E	F	G	H	W	品質 kg Weight
10m、15m、20m 系列 Series 10m, 15m, 20m	1	310	360	400	500	700	15	420	710	190	---	250	140
	2							420	825	190	---	250	170
	3							420	990	190	280	300	220
	4							420	785	265	---	250	155
	5							420	900	265	---	250	185
25m、30m 系列 Series 25m, 30m	1	310	360	450	600	800	18	420	710	190	---	250	190
	2							420	825	190	---	250	220
	3							470	990	190	280	300	250
	4							470	1105	190	280	300	280

	5							420	900	265	---	250	195
	6	310	360	550	800	1000	18	420	825	190	---	250	250
	7							470	990	190	280	300	290
	8							470	1105	190	280	300	300
	9							470	1220	190	280	300	330
	10							470	1075	265	---	300	235
	11							420	900	265	---	250	210

JT 系列彈簧外裝式電纜捲筒主要技術參數 Main Parameters of Series JT Spring Built-out Type Cable Reel

電纜型號 Cable Model	允許電流 A Allowable Current A		10m 系列 Series 10m	外型 序號 Outline Item	15m 系列 Series 15m	外型 序號 Outline Item	20m 系列 Series 20m	外型 序號 Outline Item	25m 系列 Series 25m	外型 序號 Outline Item	30m 系列 Series 30m	外型 序號 Outline Item
	連續 Continuous	一分開 On 一分關 Off										
CRHF10×2.5	12	20	JTA20-10-8-II	4	JTA20-15-8-II	4	JTA20-20-8-II	5	JTA20-25-8-II	5	JTA20-30-8-II	10
			JTB20-10-8-II		JTB20-15-8-II		JTB20-20-8-II		JTB20-25-8-II		JTB20-30-8-II	
			JTC20-10-8-II		JTC20-15-8-II		JTC20-20-8-II		JTC20-25-8-II		JTC20-30-8-II	11
			JTD20-10-8-II		JTD20-15-8-II		JTD20-20-8-II		JTD20-25-8-II		JTD20-30-8-II	
			JTE20-10-8-II		JTE20-15-8-II		5		JTE20-20-8-II			
			JTF20-10-8-II		JTF20-15-8-II				JTF20-20-8-II			
YC2×6	40	50						JTA50-25-2-II	1			
							JTB50-25-2-II					

YC2×10	58	75			JTA75-15-2-II	1	JTA75-20-2-II	1	JTA75-25-2-II	2	JTA75-30-2-II	7
					JTB75-15-2-II		JTB75-20-2-II		JTB75-25-2-II		JTB75-30-2-II	
YC2×16	77	100			JTA100-15-2-II	1	JTA100-20-2-II	2	JTA100-25-2-II	2	JTA100-30-2-II	7
					JTB100-15-2-II		JTB100-20-2-II		JTB10025-2-II		JTB100-30-2-II	
YC2×25	106	135			JTA135-15-2-II	2	JTA135-20-2-II	2	JTA135-25-2-II	3	JTA135-30-2-II	9
					JTB135-15-2-II		JTB135-20-2-II		JTB135-25-2-II		JTB135-30-2-II	
YC2×35	132	170			JTA170-15-2-II	2	JTA75-20-2-II	3	JTA75-25-2-II	4		
					JTB170-15-2-II		JTA75-20-2-II		JTA75-25-2-II			
YC3×6+×4	35	50			JTA50-15-4-II	1	JTA50-20-4-II	1	JTA50-25-4-II	2	JTA50-30-4-II	6
					JTB50-15-4-II		JTB50-20-4-II		JTB50-25-4-II		JTB50-30-4-II	
					JTC50-15-4-II		JTC50-20-4-II		JTC50-25-4-II	1	JTC50-30-4-II	
					JTD50-15-4-II		JTD50-20-4-II		JTD50-25-4-II		JTD50-30-4-II	
					JTE50-15-4-II				JTE50-25-4-II	1	JTE50-30-4-II	7
					JTF50-15-4-II				JTF50-25-4-II		JTF50-30-4-II	
YC3×10+1×6	50	65			JTA65-15-4-II	1	JTA65-20-4-II	2	JTA65-25-4-II	2	JTA65-30-4-II	7
					JTB65-15-4-II		JTB65-20-4-II		JTB65-25-4-II		JTB65-30-4-II	
					JTC65-15-4-II		JTC65-20-4-II	1	JTC65-25-4-II	1	JTC65-30-4-II	6
					JTD65-15-4-II		JTD65-20-4-II		JTD65-25-4-II		JTD65-30-4-II	
					JTE65-15-4-II	2	JTE65-20-4-II	2	JTE65-25-4-II	3	JTE65-30-4-II	8
					JTF65-15-4-II		JTF65-20-4-II		JTF65-25-4-II		JTF65-30-4-II	
YC3×16+1×6	66	85			JTA85-15-4-II	2	JTA85-20-4-II	2	JTA85-25-4-II	3	JTA85-30-4-II	8
					JTB85-15-4-II		JTB85-20-4-II		JTB85-25-4-II		JTB85-30-4-II	
					JTC85-15-4-II	1	JTC85-20-4-II	1	JTC85-25-4-II	2	JTC85-30-4-II	7
					JTD85-15-4-II		JTD85-20-4-II		JTD85-25-4-II		JTD85-30-4-II	6
					JTE85-15-4-II	2	JTE85-20-4-II	2	JTE85-25-4-II	4		
					JTF85-15-4-II		JTF85-20-4-II	3	JTF85-25-4-II			
YC3×25+1×10	91	120			JTA120-15-4-II	2	JTA120-20-4-II	3	JTA120-25-4-II	4		
					JTB120-15-4-II		JTB120-20-4-II		JTB120-25-4-II			
					JTC120-15-4-II		JTC120-20-4-II	2	JTC120-25-4-II	2	JTC120-30-4-II	7

				JTD120-15-4-II		JTD120-20-4-II		JTD120-25-4-II		JTD120-30-4-II	
				JTE120-15-4-II	3						
				JTF120-15-4-II							