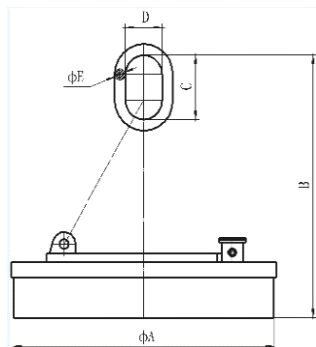


M03系列吊運板坯用電磁鐵：用於吊運大型鋼錠、連鑄板坯、厚鋼板。吊運長度6m以上的板坯時為了避免偏心而產生傾斜，請使用兩臺電磁鐵起吊。

Lifting Electromagnet Model Series M03 for Handling Plate Blanks: Applied to lifting and transferring huge steel ingots, continuous casting plate blanks and heavy steel plates. Please use two lifting electromagnets to operate on the plate blanks at the length of exceeding 6 meters in order to avoid the material tilting caused by off-center.



主要技術參數 Main technical data

DC-220V, TD-50%

型號 Model		常溫用 (100°C) Normal temperature type (100°C)							高溫用 (600°C) High temperature type (600°C)						
		M03-70L	M03-90L	M03-110L	M03-120L	M03-140L	M03-160L	M03-180L	M03-70L/2	M03-90L/2	M03-110L/2	M03-120L/2	M03-140L/2	M03-160L/2	M03-180L/2
外形尺寸 overall dimension (mm)	A	700	900	1100	1200	1400	1600	1800	700	900	1100	1200	1400	1600	1800
	B	950	920	1080	1290	1100	1663	1910	990	1050	1140	1360	1175	1720	2000
	C	180	160	250	250	280	500	500	180	160	250	250	280	500	500
	D	110	125	170	170	220	220	230	110	125	150	170	200	220	230
	E	32	50	65	85	90	90	115	32	50	65	85	90	115	
品質 Mass (kg)		540	842	1590	1984	2726	3774	5000	640	987	1680	2100	3410	4400	5800
電流 current (A)		15	21	23	29	37	55	80	12.3	15.3	19.8	30	32.8	39	53
功率 power (kw)		3.3	4.6	5	6.4	8.2	12	17.5	2.7	3.4	4.4	6.5	7.9	8.6	11.7
單臺吊運能力 (t) Lifting capacity of one unit		6	10	15	18	25	32	40	6	10	15	18	25	32	40